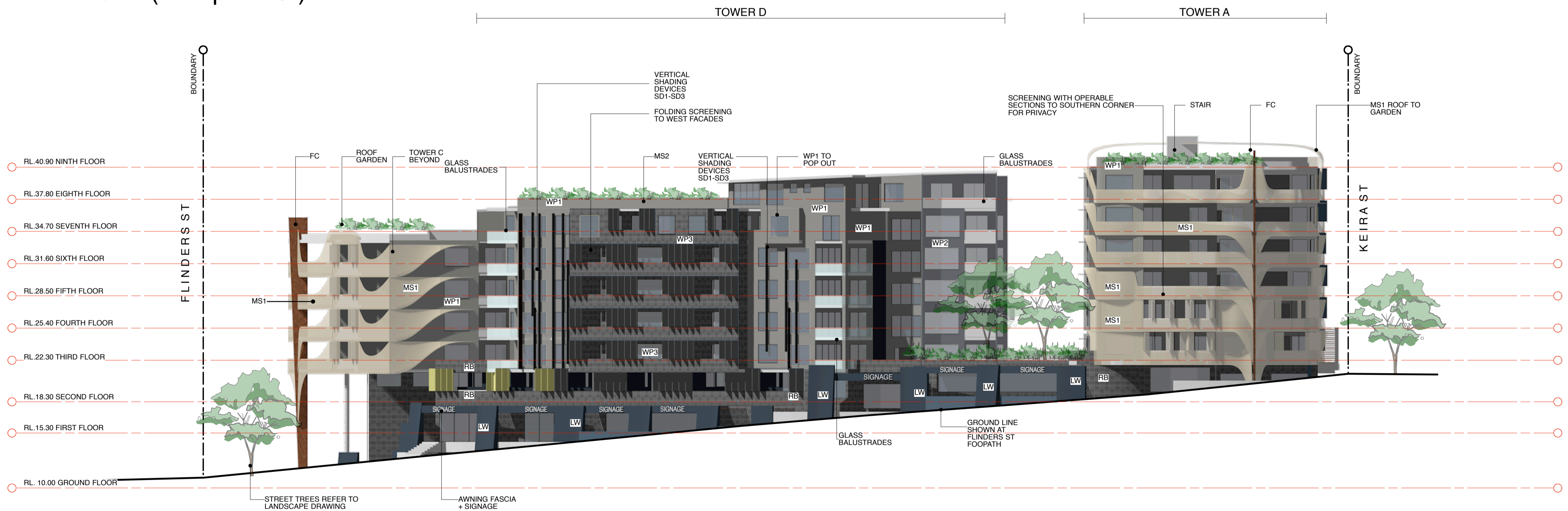


North (Campbell St)



South (Keira St)
ELEVATIONS



NOTES		LEGEND	
• REFER TO COLOUR SCHEDULE ON DRAWING DA 22 FOR FINISHES DETAILS • REFER TO BASIX CERTIFICATES FOR WINDOW SCHEDULES • REFER TO SECTIONS FOR BUILDING ENVELOPE		FC LW MS1 MS2 PF1 PF2 PF3 PF4 RB SD1 SD2 SD3 WP1 WP2 WP3	FEATURE COLUMN LANDSCAPE WALL MESH SCREEN 1 MESH SCREEN 2 PAINT FINISH 1 PAINT FINISH 2 PAINT FINISH 3 PAINT FINISH 4 RENDERED BRICKWORK SHADING DEVICE 1 SHADING DEVICE 2 SHADING DEVICE 3 WALL PANEL 1 WALL PANEL 2 WALL PANEL 3

Proposed Mixed Use Development
For Gateway Wollongong Pty Ltd
At Flinders, Keira & Campbell Streets, Wollongong

WOLLONGONG
10 Belmore Street
Wollongong
NSW 2500
T 02 42 261 387
F 02 42 286 405
W www.aej.com.au
Nominated Architect Steven Bayer Reg. No. 5890 Tilmont Pty Ltd ABN 67 003 163 451

NOWRA
92 North Street
Nowra
NSW 2541
T 02 44 216 822
F 02 44 221 963
E aej@aej.com.au

BATEMANS BAY
1 North Street
Batemans Bay
NSW 2536
T 02 44 727 388
F 02 44 221 963

REV.	DESCRIPTION	DATE	PROJECT #:	15-0043
--	• ISSUE FOR DA	6/5/16	SCALE:	1:500 @ A1
A	• WINDOW ADDED TO TOWER A CORRIDOR	9/11/16	DRAWN: GR/LQ	CHECKED: MJ
		DRAWING NO. REVISION		
		DA19 A		